

Designed to provide a moist physical barrier and minimize bleeding during and after ENT procedures, then dissolve through normal outflow

 **smith&nephew**  
**RAPID RHINO<sup>◇</sup>**  
**SINUKNIT<sup>◇</sup>**  
Dissolvable Post-Op  
Surgical Dressing



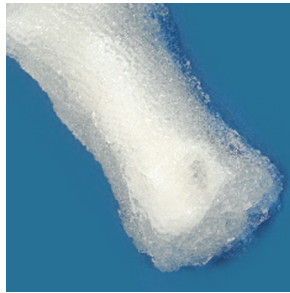
# SINU-KNIT<sup>◇</sup>

SINU-KNIT dressings are a dissolvable carboxymethylcellulose (CMC) dressing that provide a moist hydrocolloid physical barrier and are designed to minimize bleeding and post-op adhesions.

## SINU-KNIT conversion



Dry SINU-KNIT dressing



Partially hydrated  
SINU-KNIT dressing



SINU-KNIT gel

## Key features

### Provides a moist physical barrier

- Intended to support and separate mucosal tissue by providing a moist physical barrier
- Designed to minimize post-op adhesions

### Postoperative advantage

- Designed to minimize intraoperative and postoperative oozing

### Naturally dissolves away

- Dissolves away through normal outflow in 5-7 days
- Easy post-op debridement
- No need to remove post-op packing



SINU-KNIT intraoperatively

## SINU-KNIT<sup>®</sup> dissolvable dressing technique guide

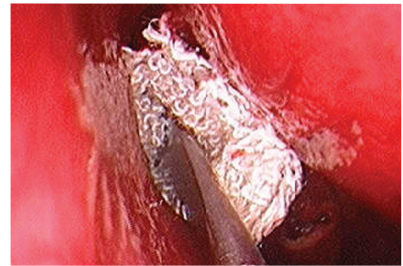
- 1 Using dry forceps, fold SINU-KNIT dressing into a ">" shape

NOTE: Using wet forceps will initiate gelling, making SINU-KNIT material sticky and difficult to place



Fold dressing into a ">"

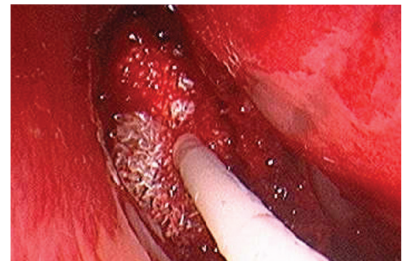
- 2 Place the SINU-KNIT dissolvable dressing into the surgical site as desired



Place SINU-KNIT dressing into the cavity

- 3 Using Sterile Water ONLY, hydrate the SINU-KNIT dressing in the surgical site. Use a minimum 10cc sterile water per side to hydrate the SINU-KNIT dressing completely, working from posterior to anterior, to ensure that ALL fibers are fully saturated

NOTE: Using saline to hydrate SINU-KNIT dressing may inhibit the SINU-KNIT conversion to a dense gel and may not fully activate its hemostatic properties



Wet SINU-KNIT fabric with sterile water

- 4 Do not apply lubricants or antibiotic ointments to the SINU-KNIT fabric. They will inhibit the hydrocolloid and hemostatic properties of the material

- 5 Patient should irrigate with isotonic saline spray daily until first office visit. SINU-KNIT dressings dissolve via normal sinus outflow in 5-7 days

NOTE: Patient should avoid aggressive bulb-type flushing during first week after surgery



Hydrated SINU-KNIT converts to dense gel stent

Please refer to the Instructions for Use (IFU) packaged with the product for a complete list of Warnings, Precautions and Contraindications.

## Ordering information

### **SINUKNIT® Dissolvable Post-Op Dressing**

<b>Reference #</b>	<b>Description</b>
RR600	SINU-KNIT DISSOLVABLE DRESSING

**ArthroCare Corporation**  
7000 West William Cannon Drive  
Austin, TX 78735  
USA

[www.smith-nephew.com](http://www.smith-nephew.com)

Information: 1-800-343-5717  
Orders/Inquiries: 1-888-994-2782